

**WELCOME TO A NEW SEASON
AT MILLER GALLERY >>>**

This Fall, we invite you to meet artists, creative practitioners, and researchers who are responding to our ever-changing world and advancing our culture. The season starts with astonishing architecture from José Oubrierie, internationally renowned protégé of Le Corbusier. The exhibition features his paintings, drawings and architectural models which have transformed tradition. In October, join us for a special performance series fusing art, dance, music and engaged discussion. Later in the fall, we focus on design experimentation and critical practice currently solving real-world challenges in real-world settings. To end our season, we celebrate the emerging talent from this year's Carnegie Mellon School of Design seniors.

Plan your visit by going to www.cmu.edu/millergallery/visit.php



“However, in the Chapel, the ground is visible ... Its presence reminds us, together with the light and the rainwater descending from the sky, of being humans on earth, and that for us, there is only ONE EARTH.” – José Oubrierie



General operating support for the Miller Gallery is provided by Carnegie Mellon University, and the exhibitions and programs are supported in part by a grant from the Pennsylvania Council on the Arts, a state agency funded by the Commonwealth of Pennsylvania, as well as the CMU College of Fine Arts and the School of Art. Support for the *Architecture With and Without Le Corbusier* exhibition comes in part from the Steven Myers Hall Foundation, the Knowlton School of Architecture and Carnegie Mellon School of Architecture. Additional support for related exhibitions and performances comes in part from the CMU School of Design and CMU School of Music.

COMING UP NEXT >>>

**ARCHITECTURE
WITH AND WITHOUT
LE CORBUSIER**

The Chapel of the Mosquitoes

JOSÉ OUBRIERIE ARCHITECTE

Aug. 20 – Nov. 13, 2016
Associate Curator Spike Wolff
Co-organized by CMU School of Architecture

Sept. 23, Fri. 5pm: Talk with José Oubrierie co-presented by CMU School of Architecture lecture series. **6-8pm: Reception.**

More events online: bit.ly/JoseOubrierie

JOSÉ OUBRIERIE is Professor Emeritus at the Knowlton School of Architecture at Ohio State University. An internationally renowned French architect and protégé of Le Corbusier, Oubrierie was the project architect for the **Saint-Pierre de Firminy Church**, seeing the final design through to completion in 2006. Other projects include the **French Cultural Center in Syria**, the **Miller House in Kentucky**, and **The Chapel of the Mosquitoes in New York**. Oubrierie is Honorary AIA, author of the recently released *Architecture With and Without LeCorbusier*, and is currently visiting professor at the School of Architecture at the University of Illinois at Chicago.

Images (left to right): Jose Oubrierie, *The Chapel of the Mosquitoes*, 2016; Deepa Butoliya, *Critical Juggled. Power of design by everyone for everyone*, 2016; Attack Theatre, *Some Assembly Required* performance. Photography: Martha Rial, Artwork in Photo: Matthias Pliessnig, *In Here*, 2009; Conrad Harris and Pauline Kim, *String Noise; Mind The Mitter*; CMU School of Design Senior Exhibition photo, 2015; Addie Wagenknecht, *Optimization of Parenting Part 2*, 2012; Interactive sculpture. Poster Side: Le Corbusier/José Oubrierie, *Saint-Pierre, Firminy Church*, 1971-2006; Photo by Andrew Viny. Front Cover: Le Corbusier/José Oubrierie, *Saint-Pierre, Firminy Church*, 1971-2006. Photo by Andrew Viny.



LATER THIS FALL >>>

CLIMACTIC: POST NORMAL DESIGN
Nov. 4 – Dec. 11, 2016 | Dec. 9: Reception

Curatorial team: Katherine Moline, Ahmed Ansari, Deepa Butoliya
Curatorium: Katherine Moline, Ahmed Ansari, Deepa Butoliya, Laurene Vaughan, Brad Haylock, Beck Davis, Peter Hall
Provocateur: Cameron Tonkinwise
Co-organized by CMU School of Design

Climactic: Post Normal Design focuses on design and postcolonial activism surrounding race, the international refugee crises, and climactic change in the Global South. The ongoing moment of perpetual contingency that characterizes contemporary life changes design. The exhibition, panel discussions, and workshops at the Miller Gallery address this change and present alternative models for design that broaden its capacity to contribute to social change.

Check online for event schedule. *Climactic: Post Normal Design* is the fourth iteration of a series of exhibitions and symposia led by *Feral Experimental: New Design Thinking*, shown at UNSW Galleries, Sydney, Australia, in 2014.



TALENT FROM CMU >>>

CMU SENIOR DESIGN EXHIBIT
Dec. 3 – 11, 2016 | Dec. 9: Reception

Co-organized by CMU School of Design
Join the CMU Design Seniors as they celebrate their accomplishments and share their most recent projects! The work featured in the show offers insight into the culmination of four years of study, pushing the boundaries of medium and method in the field of design.



PERFORMANCE SERIES >>>

SOME ASSEMBLY REQUIRED

Oct. 7 + 8, 6pm, Oct. 9, 2pm
Presented by Attack Theatre. Co-presented by CMU School of Music. Check online for ticket sales. Free to CMU students.

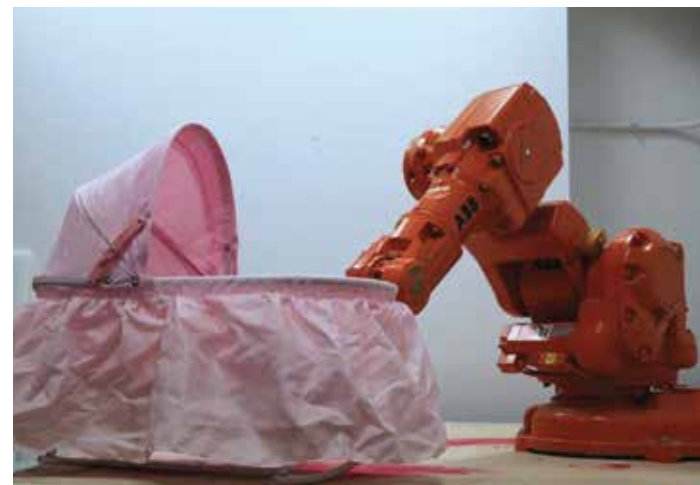
Some Assembly Required is a unique performance experience that blurs the lines between visual art, music and dance; and between audience and performer. Attack Theatre will engage the audience with creation, improvisation, and performance inspired by the *Architecture With and Without Le Corbusier* exhibition.



STRING NOISE

Oct. 8, 3-4pm
Co-Sponsored by the University of Pittsburgh. Free + open to the public.

String Noise is a classical, avant-punk violin duo comprised of violinists Conrad Harris and Pauline Kim. They have built a reputation as relentless contemporary music advocates with a propensity for the most intense and advanced classical music of today. As performers they have championed the work of extreme contemporary composers such as Bernhard Lang, Eric Lyon, and John Zorn.



NEXT YEAR >>>

**HACKING / MODDING / REMIXING
AS FEMINIST PROTEST**

Jan. 28 – Feb. 26, 2017 | Jan. 27: Reception
Curated by Angela Washko

HACKING / MODDING / REMIXING as Feminist Protest is an exhibition of twenty two artists, designers and developers working at the intersection of art and technology to intervene on dominant voices in tech and popular culture, producing critical (and often comical) works that give visibility to women's perspectives and experiences often marginalized, ignored, or dismissed.



Design: Margaret Cox. Printing: 100% post-consumer paper, processed chlorine free. Vegetable-based inks.



MILLER GALLERY AT CARNEGIE MELLON UNIVERSITY
FOUNDER: REGINA GOUGER MILLER
PURNELL CENTER FOR THE ARTS • 5000 FORBES AVE
PITTSBURGH, PA • 412.268.3618 • WWW.CMU.EDU/MILLERGALLERY

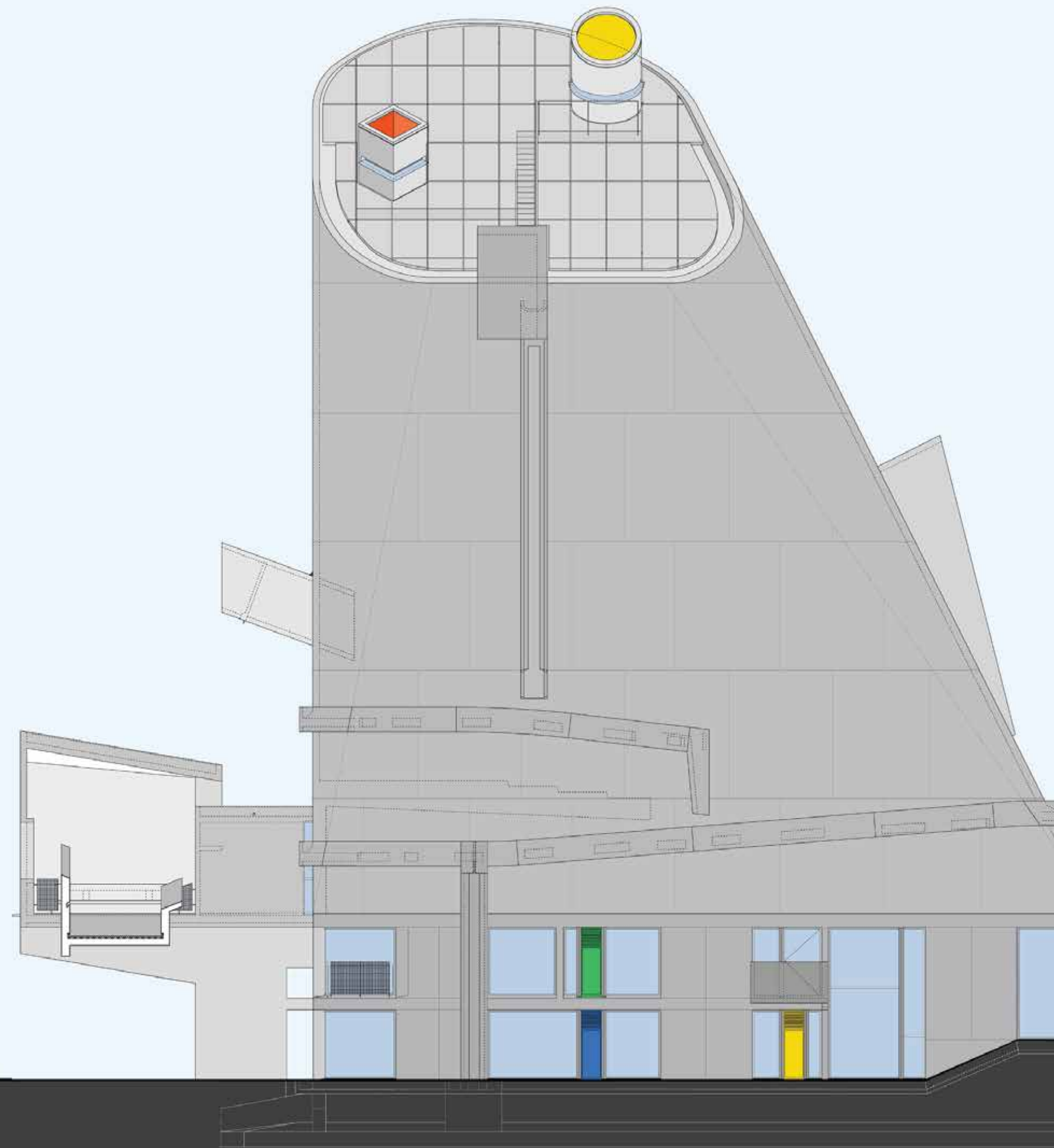
2016 >>> FALL SEASON

2016 >>> FALL SEASON



Admission: Free + open to the public
Hours: Tues.–Sun., 12-6pm. Check our calendar for exhibition dates.
Info: 412.268.3618 • millar-gallery@andrew.cmu.edu
5000 FORBES AVE • PITTSBURGH, PA 15213
PURNELL CENTER FOR THE ARTS





MILLER
GALLERY AT CARNEGIE MELLON UNIVERSITY
FOUNDER: REGINA GOUGER MILLER
PURNELL CENTER FOR THE ARTS • 5000 FORBES AVE
PITTSBURGH PA • 412.268.3618 • WWW.CMU.EDU/MILLERGALLERY

COMING UP NEXT >>>

**ARCHITECTURE
WITH AND WITHOUT
LE CORBUSIER**

The Chapel of the Mosquitoes

JOSÉ OUBRERIE ARCHITECTE
Aug. 20 - Nov. 13, 2016

Associate Curator Spike Wolff
Co-organized by CMU School of Architecture

Sept. 23, Fri.
5pm: Talk with Jose Oubrierie, co-presented
by CMU School of Architecture lecture series.
6-8pm: Reception

Carnegie Mellon University